The seal of the Arkansas State Highway Commission is centered in the background. It is a circular emblem with the text "ARKANSAS STATE HIGHWAY COMMISSION" around the perimeter. Inside the circle, there is a smaller circle with "ARKANSAS" at the top and a five-pointed star at the bottom. The center of the seal features a shield with various symbols, including a plow, a sheaf of wheat, and a scale of justice, flanked by two figures. The entire seal is rendered in a light, semi-transparent grey color.

# Arkansas State Highway Commission Meeting

**Wednesday, June 12, 2019**

The seal of the Arkansas State Highway Commission is centered in the background. It features a circular border with the text "ARKANSAS STATE HIGHWAY COMMISSION". Inside the circle, there is a central figure holding a scale, surrounded by stars and the word "ARKANSAS". Below the figure is a banner with the motto "REGNAT POPULUS".

# Agenda Item 1

## Meeting Minutes

### May 1, 2019

The background features a large, faint watermark of the Arkansas State Highway Commission seal. The seal is circular and contains the text "ARKANSAS STATE HIGHWAY COMMISSION" around the perimeter. In the center, it depicts a figure holding a scale, surrounded by stars and the word "ARKANSAS".

# Agenda Item 2

## Consideration of Minute Orders

The seal of the Arkansas State Highway Commission is centered in the background. It features a circular border with the text "ARKANSAS STATE HIGHWAY COMMISSION". Inside the circle, there is a central figure holding a scale and a sword, surrounded by stars. The word "ARKANSAS" is written above the figure, and "REGNAT" is written below it. The seal is rendered in a light, semi-transparent grey color.

# Agenda Item 3

**Proposed 2019 – 2020 Operating Budget**



# *Proposed Operating Budget - SFY 2020*

## **Salary Highlights**

- Performance-based Pay Raises
- Retirement Match Increase
- Includes Career Service Recognition Payment Increase
- Budgeted 48 Fewer Positions For FY 2020
- Additional Highway Police Officers
- Includes Career Service Recognition Payment Increase

# *Proposed Operating Budget - SFY 2020*

## **Operation Highlights**

- 2% Increase to District Maintenance Budget
- Upgrades to Computer Systems, Phone System and Software Maintenance
- Includes Inclement Weather Reserve

# Proposed Operating Budget - SFY 2020

Source	Estimated State Funds
Traditional Revenue	
State Highway Fund Receipts	409,974,690
Less 4 ¢ Diesel Designated for Bond Program	(17,000,000)
Natural Gas Severance Tax	24,028,120
Interest Income	8,434,273
Total Projected State Revenue	425,437,083
State Funds Committed in Operating Budget	340,922,600
Operating Funds Available for Federal Matching	84,514,483
Act 1	
1/2¢ Sales Tax Treasurer Fee Waiver	5,900,000
Securities Reserve Fund	20,000,000
Return of Diesel Tax	2,700,000
25% General Revenue Surplus/Rainy Day Fund	21,400,000
Total Act 1 Funds	50,000,000
Act 416 of 2019	
Fuel Tax	34,100,000
Alternative Fuel Fees	1,200,000
New Casino Tax	35,000,000
Total Act 416 Funds	70,300,000
<b>State Funds Available for Projects</b>	<b>204,814,483</b>

# Proposed Operating Budget - SFY 2020

Budget Section	Salaries	Overtime	Payroll Additives	Operating Expenses	Less Federal Portion	State Funds	Totals
Director	15,857,500	513,500	3,768,500	7,310,000	4,603,500	22,846,000	27,449,500
AC - Administration	9,621,500	15,500	2,218,500	13,398,000	3,690,000	21,563,500	25,253,500
ACE - Planning	15,401,000	15,500	3,547,000	3,884,000	12,263,300	10,584,200	22,847,500
ACE- Design	11,175,500	2,000	2,572,000	1,257,000	6,613,500	8,393,000	15,006,500
ACE - Operations	125,303,000	3,347,000	29,596,000	102,565,500	30,330,500	230,481,000	260,811,500
Capital Outlay	0	0	0	29,694,400	897,500	28,796,900	29,694,400
Special Allotments	3,000,000	500,000	805,000	13,953,000	0	18,258,000	18,258,000
<b>Totals</b>	<b>180,358,500</b>	<b>4,393,500</b>	<b>42,507,000</b>	<b>172,061,900</b>	<b>58,398,300</b>	<b>340,922,600</b>	<b>399,320,900</b>

# *Proposed Operating Budget - SFY 2020*

**Overall Increase in  
Budget Request**

**2.6% - \$10.3 Million**

The seal of the Arkansas State Highway Commission is centered in the background. It features a circular border with the text "ARKANSAS STATE HIGHWAY COMMISSION". Inside the circle, there is a central figure holding a scale and a sword, surrounded by stars and the word "ARKANSAS". Below the figure is a banner with the motto "REGNAT POPULUS JUSTITIA".

# Agenda Item 4

## Discussion of New Highway Program

# Statewide Transportation Improvement Program Development Process

- ✓ State Highway Needs and Capital Improvements Study
- ✓ Determination of the Funding Distribution by Category
- ✓ Decision Lens Software Ranking of Projects
- ✓ Project Selection Validation
- ✓ Final Project Selection



# Estimated Average Annual Construction Funds Fiscal Years 2016-2020

Net Federal Funds (Est. Average Annual Revenue from FAST Act)..... \$ 535 million

State Highway Funds (Est. Avg. Annual Revenue 2016-2020)..... \$ 455 million

---

Total Federal and State Highway Funds..... \$ 990 million

**Less Federal Funds for:**

Fixed Budgeted Expenditures (Maintenance, Administration and Operations) ..... \$30 million

**Non-Construction Programs**

Statewide Planning & Research ..... \$11 million

Metropolitan Planning ..... \$2 million

Surface Transportation Set Aside - Transportation Alternatives Program ..... \$10 million

Surface Transportation Set Aside - Recreational Trails Program ..... \$2 million

Right-of-Way, Utilities ..... \$25 million

Obligation Limitation ..... \$25 million

**Total Reduction - Federal Funds (\$ 105) million**

**Less State Funds for:**

Fixed Budgeted Expenditures (Maintenance, Administration and Operations) ..... \$318.0 million

State Match for Non-Construction Programs (State Planning & Research) ..... \$3.0 million

**Total Reduction - State Funds (\$ 321) million**

**Less Federal and State Funds for IRP Commitment:**

Federal Interstate Maintenance Funds ..... \$58.0 million

4¢ Diesel Fuel Tax ..... \$17.0 million

Federal and State Funds to Supplement IRP ..... \$42.0 million

**Total Reduction - Federal and State Funds for IRP Commitment (\$ 117) million**

---

**Total Federal and State Funds Available for Highway Construction..... \$ 447 million**

**\$ 447,000,000**



# State Highway Needs and Capital Improvements Study

## • Ten-Year Needs

- ✓ System Preservation
  - Pavement
  - Bridges
  - Congestion Relief
- ✓ Safety
- ✓ Operations and Maintenance
- ✓ Verified by Legislative Audit in 2017

## • Capital Improvement Goals

- ✓ Four-Lane Grid System
- ✓ New Location Routes
- ✓ New or Modified Interchanges



# System Preservation

- **Ten-Year “Needs” Study**

- ✓ **System Preservation**

- **Pavement**

- ✓ Pavement Condition Index (PCI)
- ✓ Condition Rating: A – F

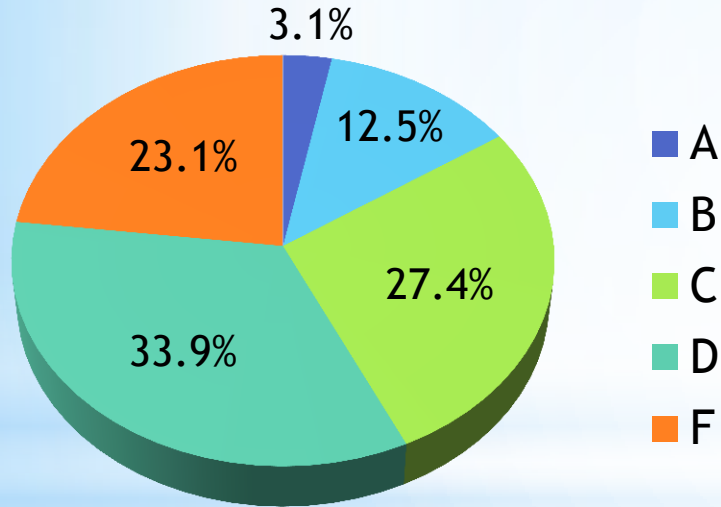
- **Bridges**

- ✓ National Bridge Inspection Standards (NBIS)
- ✓ Condition Rating: Poor, Fair, and Good



# System Preservation - Pavement

## Ten-Year “Needs” Study



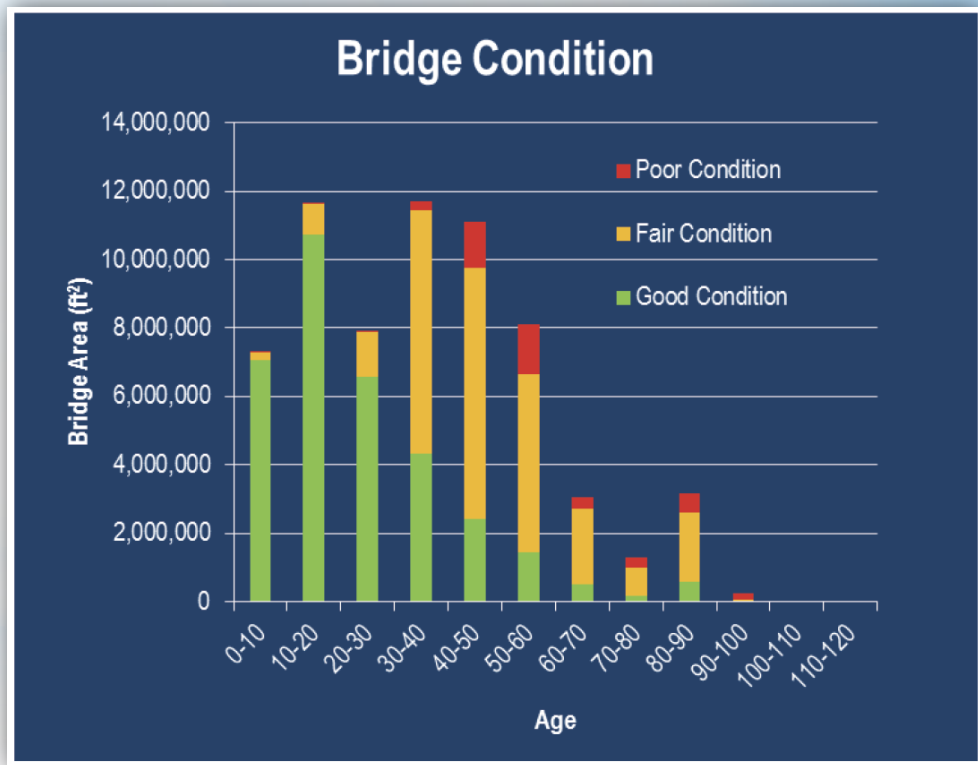
Highway System Type	Grade Level (2016)	Goal Grade	Annual Cost to Reach Goal Grade
Interstate System	B	A	\$0*
Non-Interstate National Highway System	C	B	\$79 M
Other Arkansas Primary Highway Network	C-	C+	\$96 M
Non-Arkansas Primary Highway Network	D	C	\$212 M
<b>Total</b>			<b>\$387 M</b>

\*Financed through the Interstate Rehabilitation Program.

# System Preservation - Bridge

- Ten-Year “Needs” Study

- ✓ Number: 7,297
- ✓ Deck Area: 56 million ft<sup>2</sup>
- ✓ Condition: 6.8% in Poor
- ✓ Needs: \$117 M (Annual)



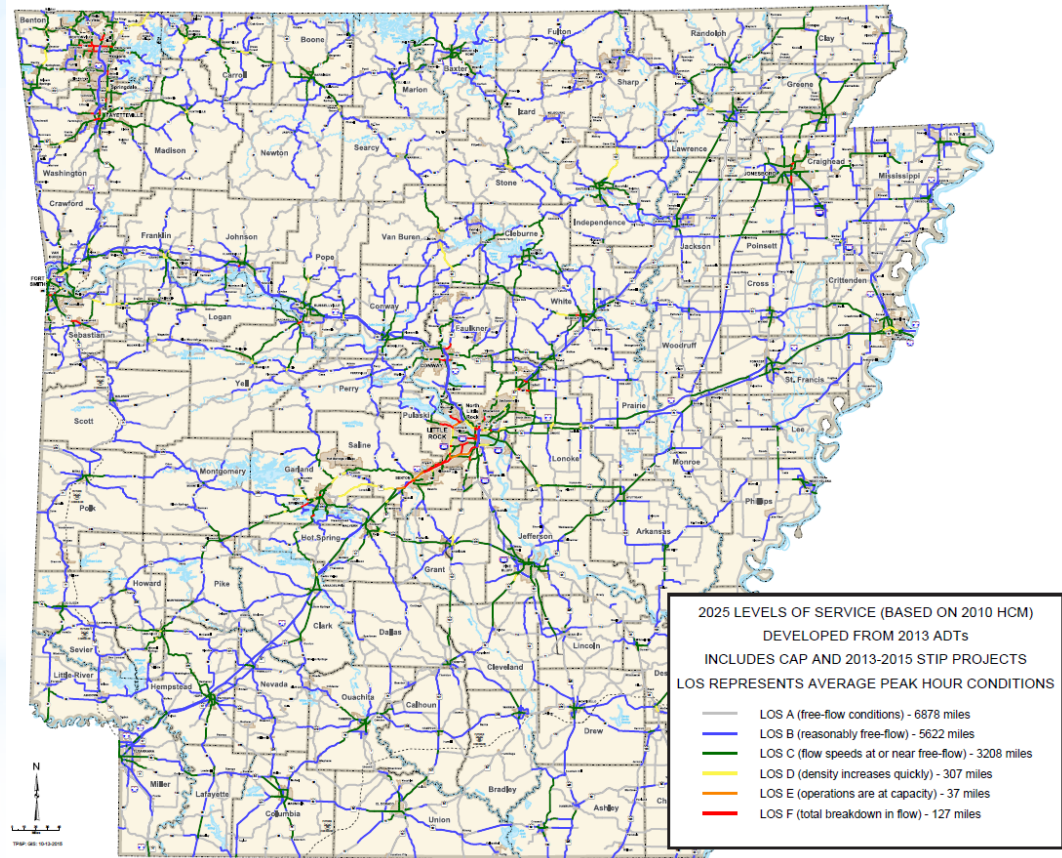


# System Preservation - Congestion Relief

- **Ten-Year “Needs” Study**

- ✓ **Congestion Relief**

- 164 miles
- \$3.05 Billion



# Safety

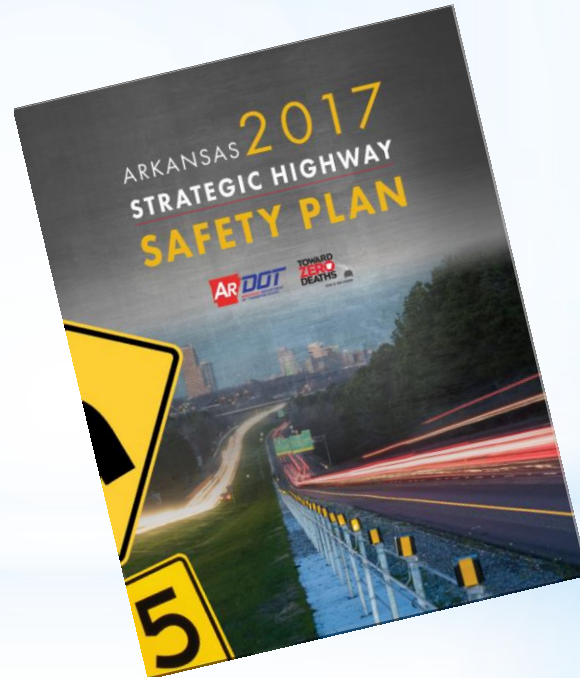
- **Ten-Year “Needs” Study**

- ✓ **Safety**

- **Primary Emphasis Areas**

- ❑ Roadway Departure
- ❑ Intersections
- ❑ Work Zones
- ❑ Railroad Crossings

- **Needs: \$86 M (Annual)**





# Operations and Maintenance

- **Ten-Year “Needs” Study**

- ✓ **Intelligent Transportation System**

- ❑ Traffic Management Systems
- ❑ Road Weather Info Systems
- ❑ \$30 M

- ✓ **Equipment**

- ❑ \$190 M

- ✓ **Facilities**

- ❑ \$80 M



# Funding Versus Needs

## Arkansas State Highway Needs

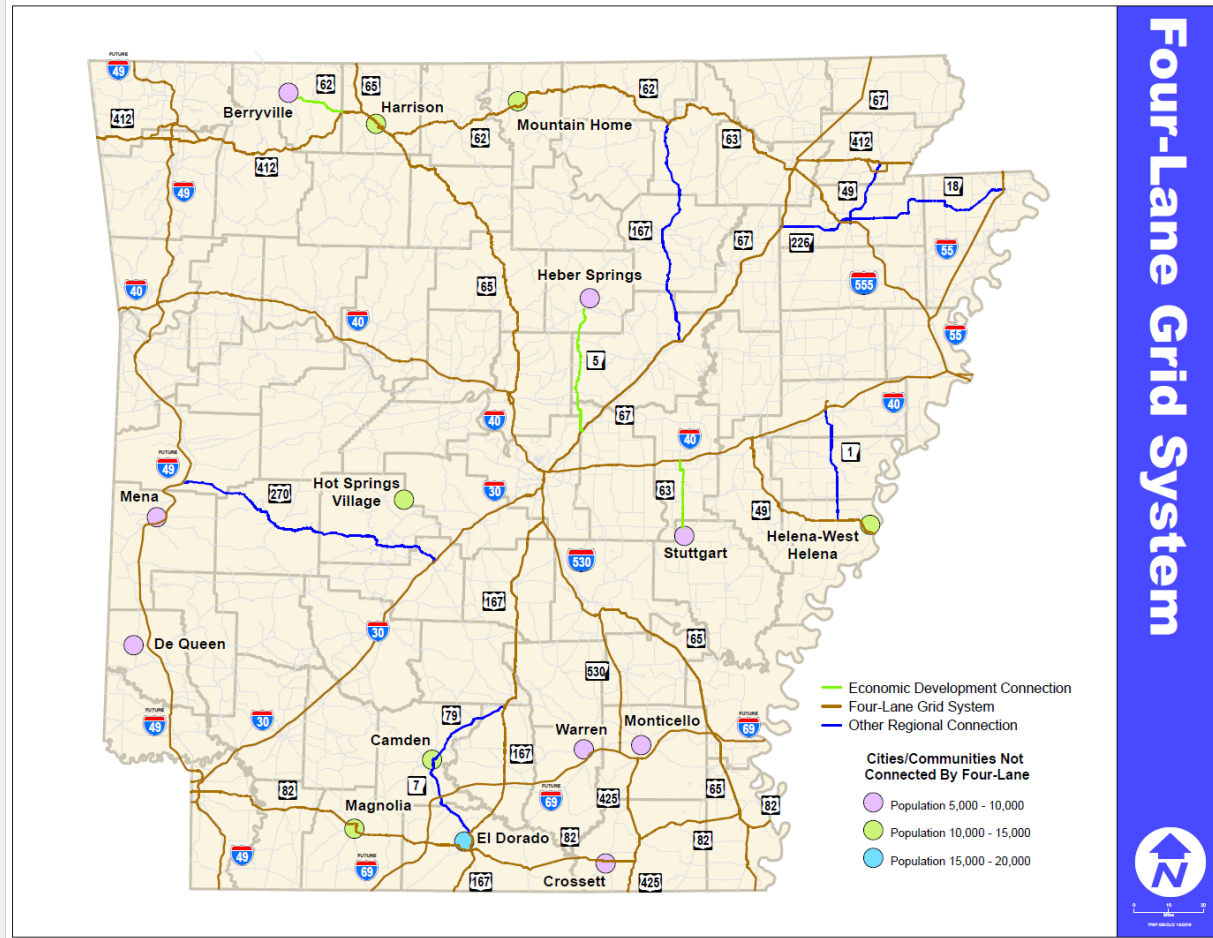
Verified by  
Arkansas  
Legislative  
Audit

Annual Needs Next 10 Years Versus Annual Revenue Available Through 2020			
<b>System Preservation</b>			
	Pavement	\$387,000,000	
	Bridges	\$117,000,000	
	Total System Preservation	\$504,000,000	
<b>Capacity Improvements for Congestion Relief</b>		\$305,000,000	
<b>Safety Improvements</b>		\$ 86,000,000	
<b>Maintenance</b>			
	Equipment Upgrades	\$ 19,000,000	
	Facilities Upgrades	\$ 8,000,000	
	Intelligent Transportation Systems (ITS)	\$ 3,000,000	
	Total Maintenance	\$ 30,000,000	
<b>Total Annual Funds Needed for Highway Construction Plan</b>		\$925,000,000	
<b>Annual Funds Available for Highway Construction through the FAST Act (does not include funds committed to Interstate rehabilitation = \$117,000,000 annually)</b>			\$447,000,000
<b>Shortfall for Needs</b>		\$478,000,000	

# Capital Improvement Goals

## Four-Lane Grid System

✓ Connectivity



Four-Lane Grid System



THE WORLD'S SOURCE

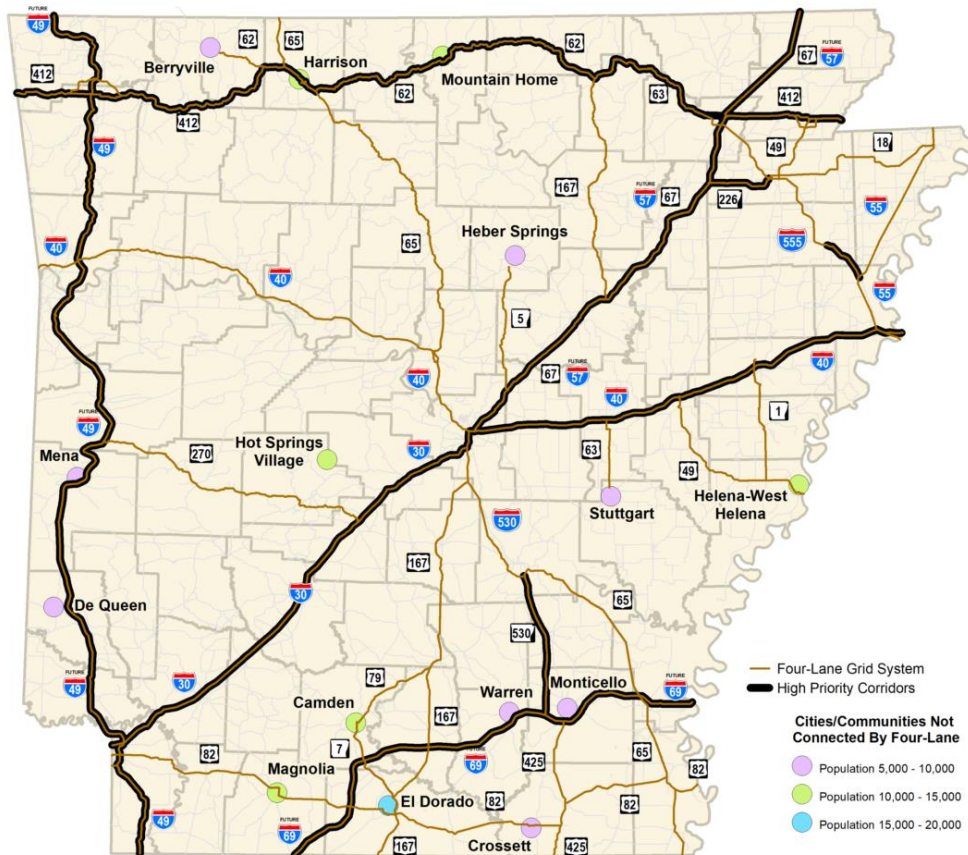




# Capital Improvement Goals

## Four-Lane Grid System

✓ High Priority Corridors



Congressionally Designated  
High Priority Corridors

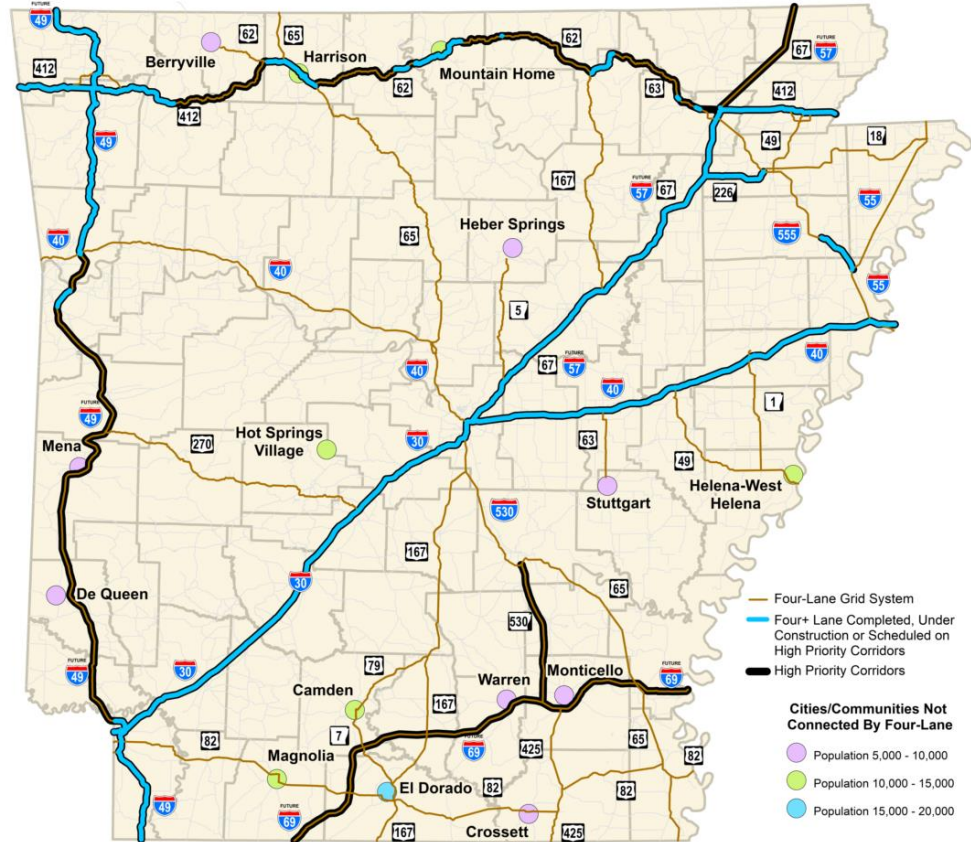




# Capital Improvement Goals

## Four-Lane Grid System

- ✓ High Priority Corridors
- ✓ Completed or Scheduled



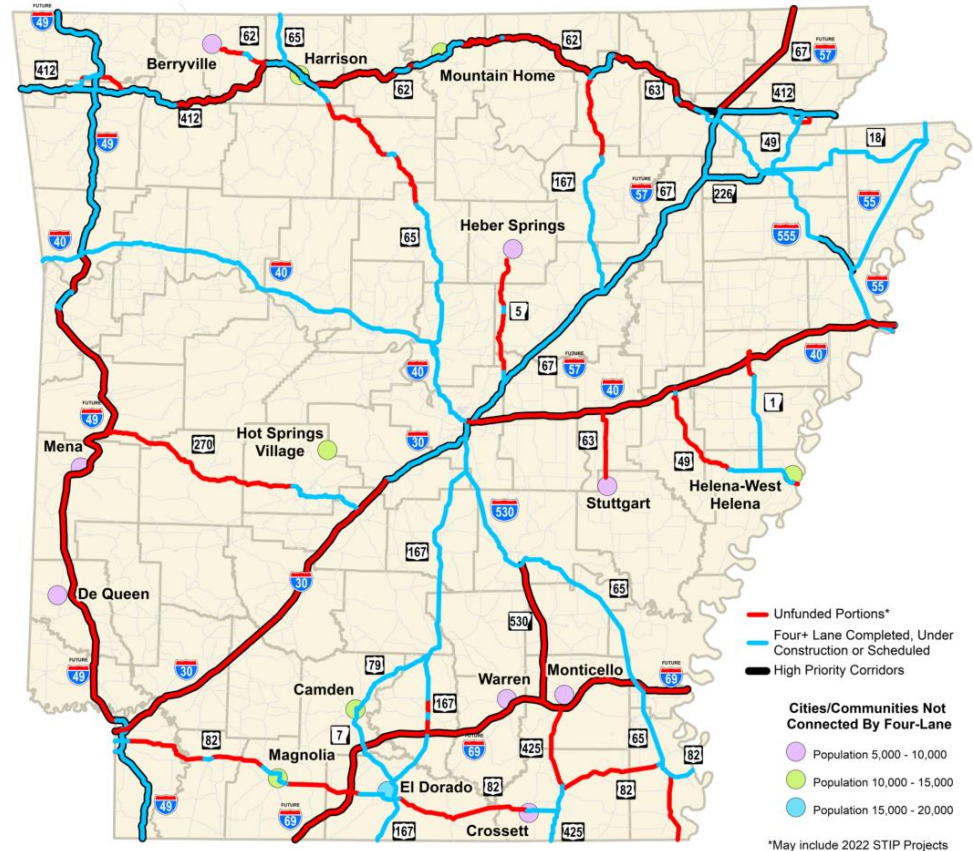
Four+ Lane Completed, Under Construction or Scheduled Through 2022 on the High Priority Corridors



# Capital Improvement Goals

## Four-Lane Grid System

✓ Unscheduled Work

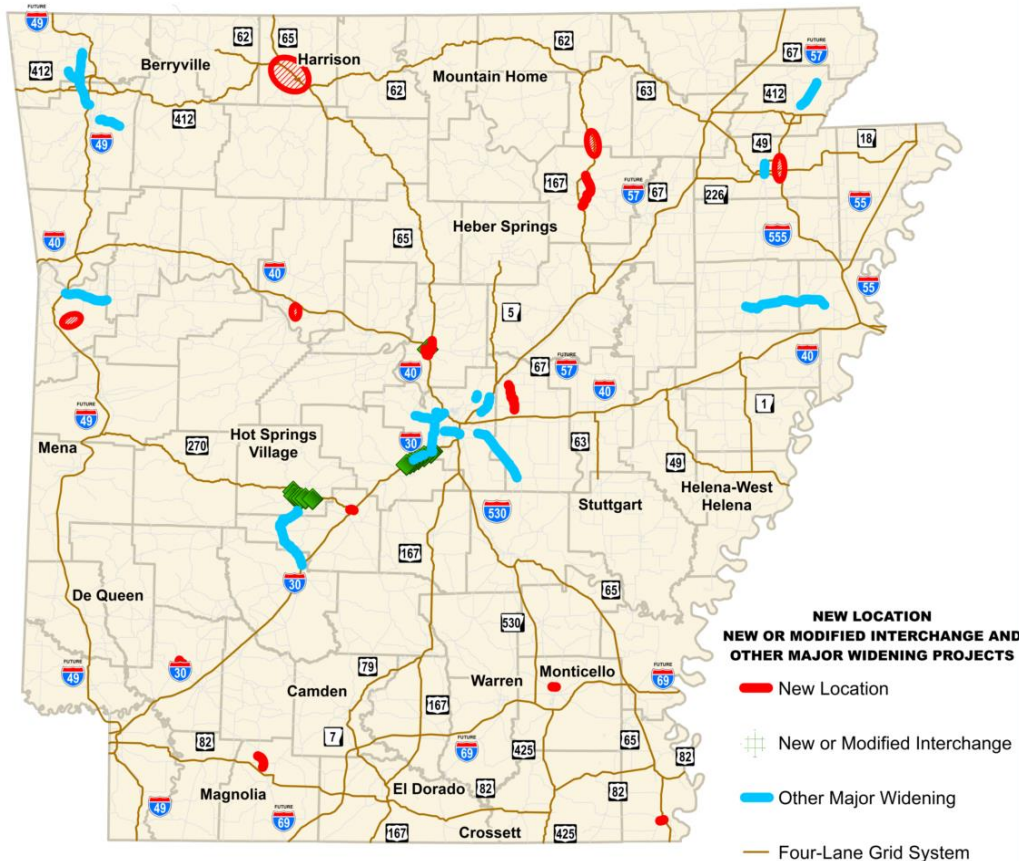


Unfunded Four-Lane Grid System \*





# Capital Improvement Goals



## Capital Improvement Goals

- New Location Routes
- Major Widening
- New or Modified Interchanges



# State Highway Needs and Capital Improvements Study

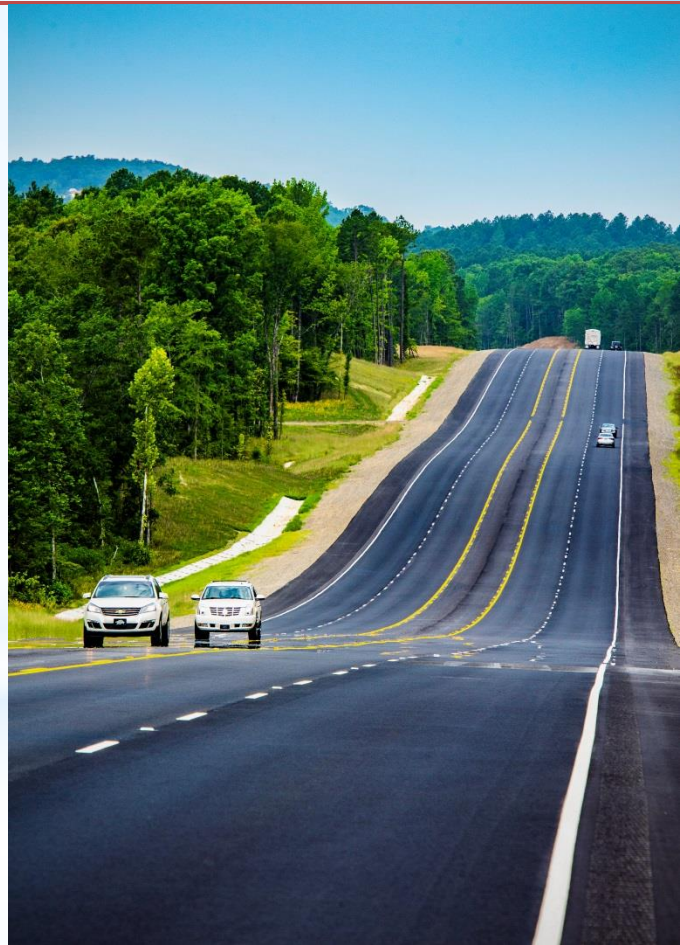
## • Capital Improvements Goals

### ✓ Four-Lane Grid System

- ❑ Connectivity
- ❑ 1,140 miles
- ❑ \$12.7 B

### ✓ Other Capital

- ❑ New Location
- ❑ Other Major Widening
- ❑ New or Modified Interchanges
- ❑ \$1.2 B



# Capital Improvement Goals

## Identified Capital Improvement Projects

<b>Four Lane Grid System</b>	<b>\$ 12,700,000,000</b>
<b>New Location / New or Modified Interchanges</b>	<b>\$ 921,000,000</b>
<b>Other Major Widening</b>	<b>\$ 258,000,000</b>
<b>Grand Total</b>	<b>\$ 13,879,000,000</b>

# Statewide Transportation Improvement Program (STIP) Development Process

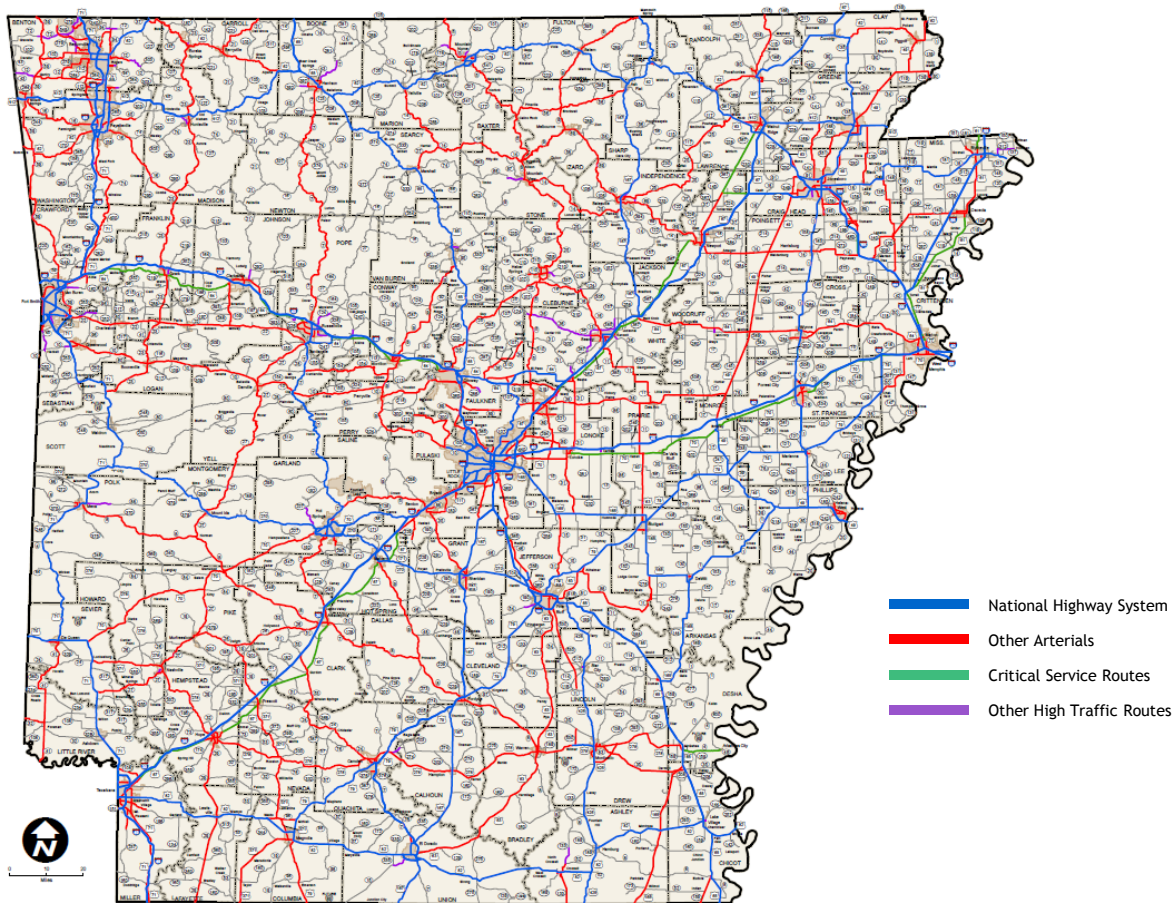
## Determination of Funding Distribution by Category

### Investment Plan for STIP

- |                                    |     |
|------------------------------------|-----|
| ✓ System Preservation              | 80% |
| ✓ Capital Improvements             | 20% |
| ✓ Arkansas Primary Highway Network | 90% |



# Arkansas Primary Highway Network



## ESTIMATED AVERAGE ANNUAL FUNDING SUMMARY

(x \$1 Million)

<b>Federal Funds</b>	<b>\$ 535</b>
<b>State Highway Revenue</b>	<b>\$ 455</b>
Less Federal and State Funds (Fixed Budget Expenditures, Non-ARDOT Projects, 4¢ Diesel Fuel Tax Statewide Planning & Research, Right of Way, Utilities, IRP and CAP Commitments, etc.)	\$ (501)
<b>Total Federal &amp; State Funds Available for Highway Construction</b>	<b>\$ 489</b>
<b>Less Federal and State Matching Funds for:</b>	
Bridges	\$ (90)
Interstate Maintenance (Amount Committed to IRP)	\$ (42)
Federal-aid Safety (Highway Safety Improvements, Rail Highway Crossing Hazard Elimination and Protective Devices)	\$ (41)
<b>Annual Commission Flexible Funding</b>	<b>\$ 316</b>

### DISTRIBUTION OF AVAILABLE ANNUAL FUNDING

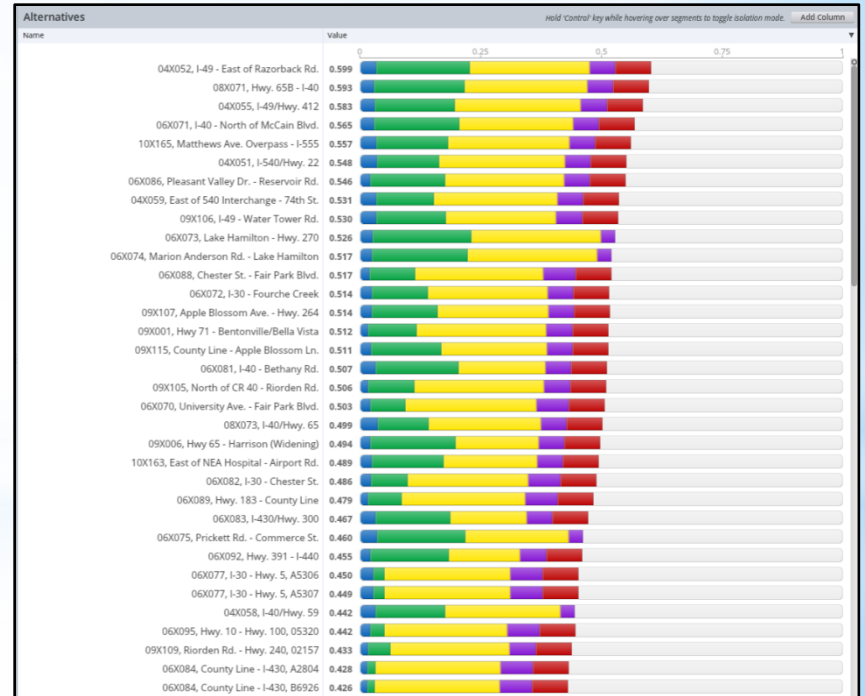
80%	[	<b>PAVEMENT PRESERVATION</b>	<b>\$ 253</b>
		<b>CAPACITY IMPROVEMENTS</b>	
20%		<b>CAPITAL IMPROVEMENTS</b>	<b>\$ 63</b>

# STIP Development Process

## Decision Lens Software Evaluation of Projects

### Decision Lens Criteria

- ✓ Safety
- ✓ Infrastructure Condition
- ✓ Mobility
- ✓ Economic Consideration
- ✓ Performance Measures





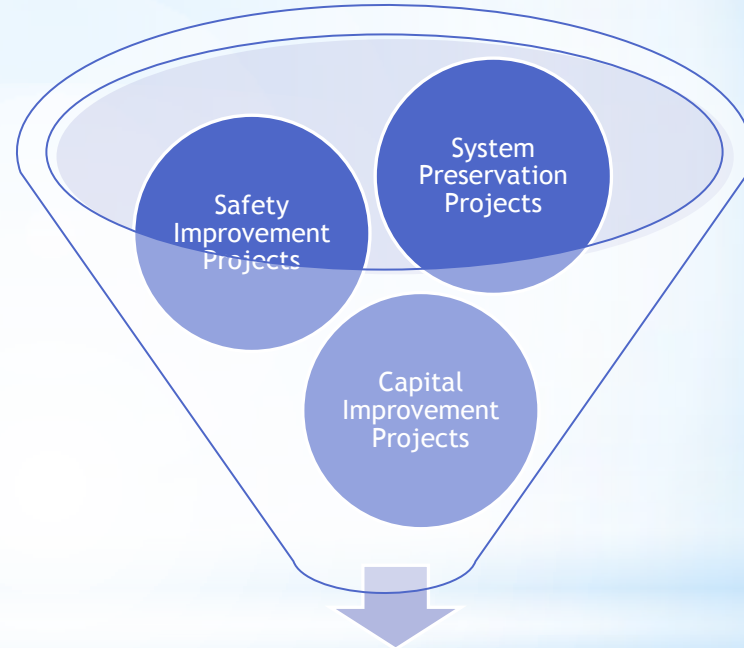
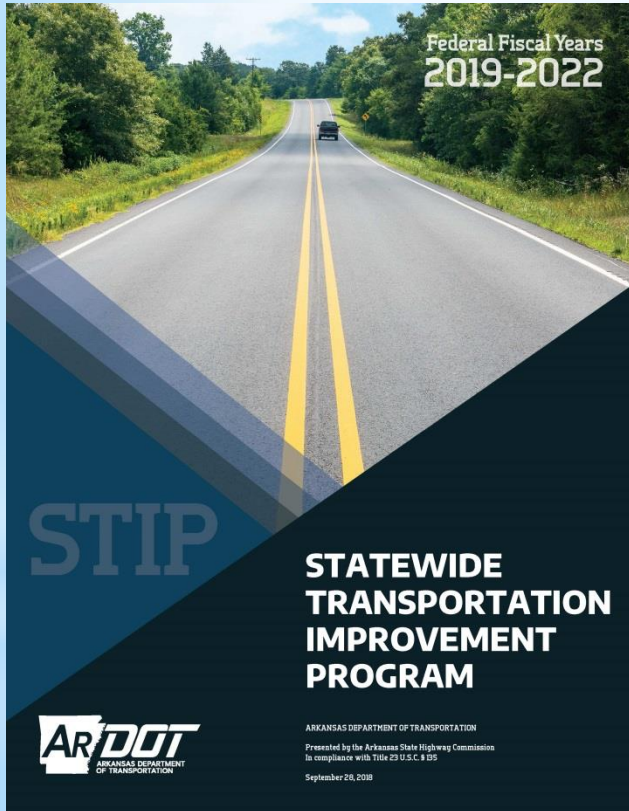
# STIP Development Process

## Project Selection Validation



- ✓ Other Factors Considered
  - District Engineers
    - Engineering Judgment
    - Technical Expertise
  - Partnering

# STIP Development Process



Prioritized Within the Funding Available  
**\$447 Million**







# Governor's Long-Term Highway Funding Plan

## Act 416 Summary

Motor Fuel Tax

\$ 58 Million

Electric and Hybrid Vehicle Registration Fees

\$ 2 Million

Casino Revenue

\$ 35 Million

**Total to ARDOT**

**\$ 95 Million**



# Governor's Long-Term Highway Funding Plan

## Proposed Constitutional Amendment

General Election Ballot – November 2020

½-Cent Sales Tax Permanent after 2023

Continues to Provide **\$205 Million** to ARDOT Annually

Continues to Provide **\$43 Million** to Cities Annually

Continues to Provide **\$43 Million** to Counties Annually



# Governor's Long-Term Highway Funding Plan

Act 416

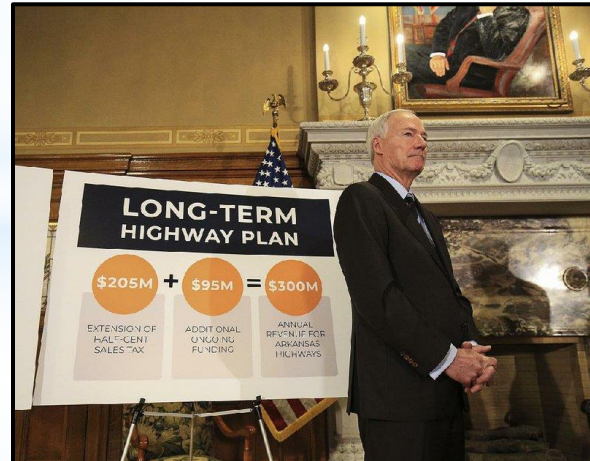
\$ 95 Million

House Joint Resolution 1018

\$205 Million

**Total to ARDOT**

**\$300 Million**



# Governor's Long-Term Highway Funding Plan

## Benefits from \$300 Million Per Year

Provide \$8.2 Billion in Economic Activity

Support 3,596 Jobs Each Year

Maintain Interstates in a State of Good Repair

Improve 7,000 to 11,000 Miles of Highways

Replace Structurally Deficient and Posted Bridges

Increase Safety Improvements

Implement a Second Connecting Arkansas Program

# Governor's Long-Term Highway Funding Plan

## Option 1

• Interstate Maintenance	\$1.0 Billion
• Pavement Preservation	\$3.8 Billion
• Bridge Replacement and Preservation	\$1.1 Billion
• Capital and Congestion Relief Improvements	\$1.0 Billion
• Safety Improvements	<u>\$0.5 Billion</u>
Total	\$7.4 Billion

# Governor's Long-Term Highway Funding Plan

## Option 2

• Interstate Maintenance	\$1.0 Billion
• Pavement Preservation	\$3.0 Billion
• Bridge Replacement and Preservation	\$1.1 Billion
• Capital and Congestion Relief Improvements	\$1.8 Billion
• Safety Improvements	<u>\$0.5 Billion</u>
Total	\$7.4 Billion



# Governor's Long-Term Highway Funding Plan

## Option 3

• Interstate Maintenance	\$1.0 Billion
• System Preservation <i>Includes Pavement and Congestion Relief Improvements</i>	\$4.8 Billion
• Bridge Replacement and Preservation	\$1.1 Billion
• Capital Improvements	\$0.0 Billion
• Safety Improvements	\$0.5 Billion
	<hr/> <hr/>
Total	\$7.4 Billion

# Governor's Long-Term Highway Funding Plan

Category	Option 1	Option 2	Option 3
	(x \$1 Billion)		
Interstate Maintenance	\$1.0	\$1.0	\$1.0
Pavement or System Preservation	\$3.8	\$3.0	*\$4.8
Bridge Replacement and Preservation	\$1.1	\$1.1	\$1.1
Capital and Congestion Relief Improvements	\$1.0	\$1.8	\$0.0
Safety Improvements	\$0.5	\$0.5	\$0.5

\* Includes Congestion Relief Improvements



The seal of the Arkansas State Highway Commission is centered in the background. It is a circular emblem with the text "ARKANSAS STATE HIGHWAY COMMISSION" around the perimeter. Inside the circle, there is a central figure holding a scale and a sword, surrounded by stars. Below the figure is a banner with the Latin motto "REGNAT POPULUS".

# Agenda Item 5

## Upcoming Events



# Upcoming Events

**June 19**

Conway Kiwanis Club | Director Bennett

12:00 p.m. | Conway, AR

HCRAS | Director Bennett

1:30 p.m. | MAC Room B, State Capitol

**June 21-29**

Vacation | Director Bennett

# Upcoming Events

**July 11**

**Statewide ROADeo Finals**

**July 24**

**Arkansas Highway Commission Meeting**

The background features a large, faint, circular seal of the Arkansas State Highway Commission. The seal contains the text "ARKANSAS STATE HIGHWAY COMMISSION" around the perimeter and "ARKANSAS" at the top. In the center, there is a figure holding a scale, surrounded by stars and a banner with the motto "REGNAT POPULUS".

# Agenda Item 6

## Other Business and Discussion

# Historic Flooding





# State Highway 7 near the Arkansas River







# State Highway 155 South of Dardanelle





# Traveler Information Center

## TRAVELER INFORMATION



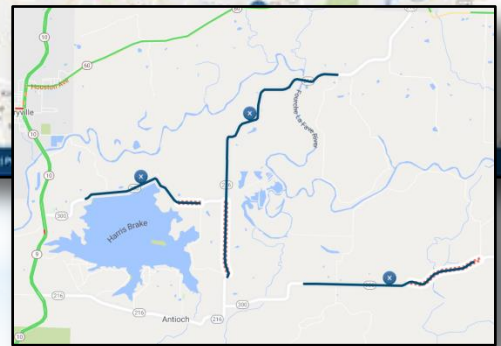
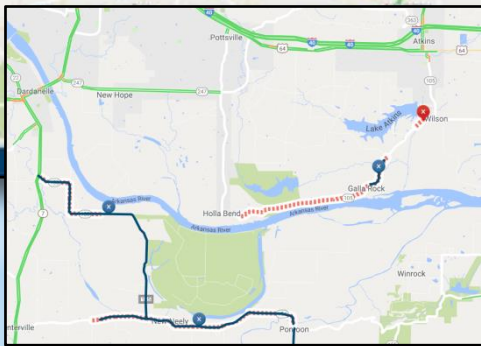
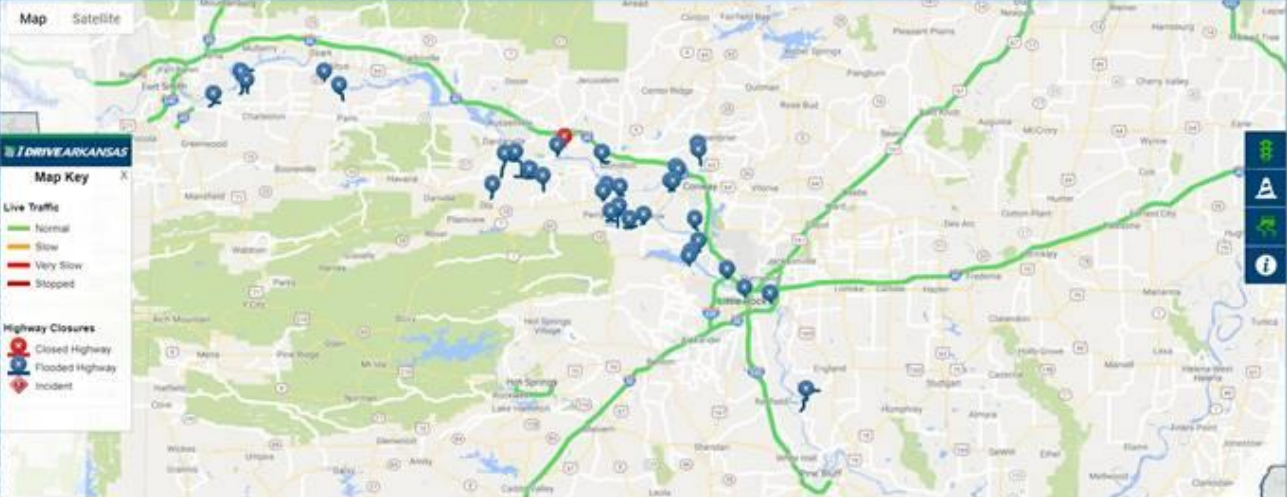
CALL OR TEXT 501-569-2374

### NEIGHBORING STATES\*

LOUISIANA	888-762-3511
MISSISSIPPI	601-359-1993
MISSOURI	888-275-6636
OKLAHOMA	844-465-4997
TENNESSEE	877-244-0065
TEXAS	800-452-9292

\*Text feature not available.





AT&T LTE 3:15 PM 57%

IDRIVE ARKANSAS

Map Satellite

Cypress Valley Springfield Republican

**Traffic Camera**

I-40 E. of Cadron Creek

AR DOT

Camera View: **W** 1248B

Temperature: 91° Elevation: 387.97 ft.

REPORT A PROBLEM TERMS OF USE

Bigelow Lollie Mayflower

# IDriveArkansas

LIVE



BREAKING NEWS TEAM COVERAGE

CHAD ADAMS  
ARDOT

# Working Together

LIVE 680

LIVE




BREAKING NEWS TEAM COVERAGE

ARKANSAS RIVER FLOODING

FLOOD EMERGENCY

1:16  
62°

5 NEWS

The seal of the Arkansas State Highway Commission is centered in the background. It is a circular emblem with a double border. The outer border contains the text "ARKANSAS STATE HIGHWAY COMMISSION" at the top and "SEAL" at the bottom, separated by a small star. The inner circle features the state seal of Arkansas, which includes a central shield with a plow, a sheaf of wheat, and a cotton plant, topped by a sunburst and the word "ARKANSAS".

# Arkansas State Highway Commission Meeting

**Wednesday, June 12, 2019**